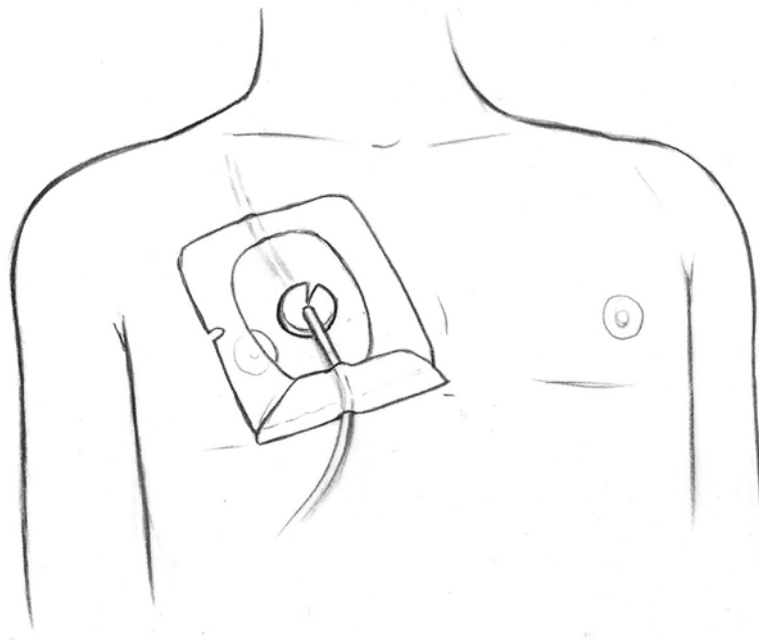




Changing Your Hickman Dressing

Your Hickman Catheter is covered by a clear dressing. This dressing is sterile.

- Change the clear dressing every 7 days.
- If you have gauze underneath the clear dressing, change it every 2 days.
- If your dressing gets wet or comes loose, change it immediately.



To change your dressing, follow the steps on the next pages.

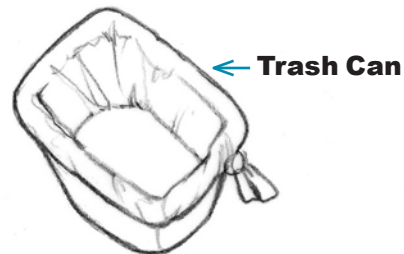
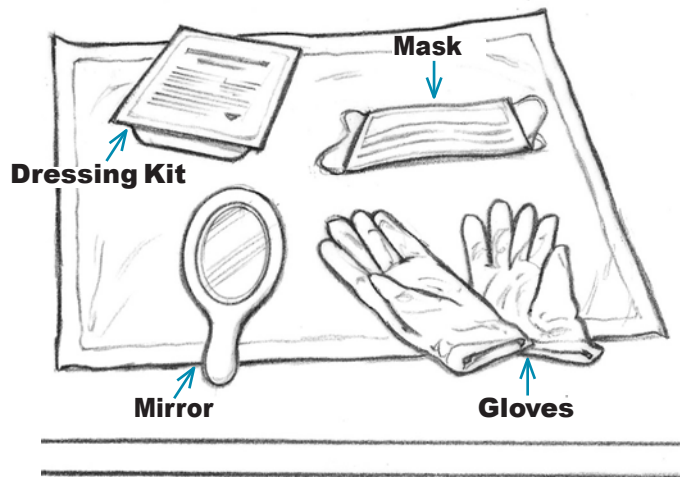
Step 1

Clean your work table with a disinfectant wipe.

Step 2

Gather your supplies:

- Dressing kit
- Non-sterile gloves
- Mirror
- Mask – if you have a cold, cough, or runny nose
- Open trash can



Step 3

- Wash your hands with soap and water for 30 seconds.
- Dry your hands with a clean paper towel.
- You may also use an alcohol-based hand sanitizer.

Step 4

- Open the dressing kit on the work table.
- **It is sterile inside**, so do not touch the inside of the kit.

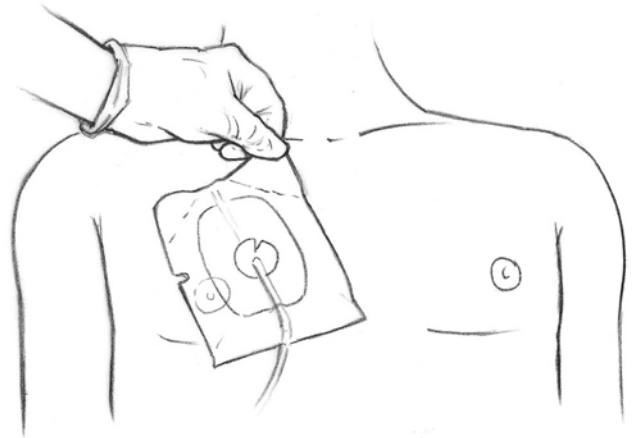


Step 5

Put on a pair of non-sterile gloves and a mask if you need one.

Step 6

- Loosen the edges of all 4 sides of your old dressing.
- Carefully take off the old dressing, and throw it away in the trash.
- If you have a Biopatch or gauze, please take it off, and throw them away.



Be very careful not to pull or tug on your catheter while taking off the old dressing.

Step 7

Take off the non-sterile gloves. Throw them away.

Step 8

Wash or clean your hands with the hand sanitizer.

Step 9

Use the mirror to check the area around the catheter for signs of infection, like:

- Redness, swelling, or warmth
- Pus or drainage
- A red streak on the skin that is over the catheter



If you see any signs of infection, call your doctor as soon as you finish changing your dressing.

Step 10

Put on a new pair of non-sterile gloves.

Cleaning with ChloroPrep

Step 11 A

- Open the ChloroPrep package in your kit.
- Squeeze the plastic wings on the side.



Step 11 B

- Clean the skin around your catheter with the ChloroPrep swab.
- Scrub back and forth for 30 seconds.



Step 11 C

- Scrub over and under your catheter.

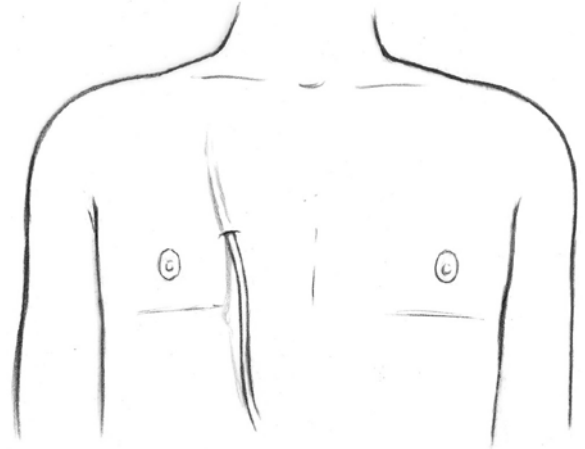


Step 12

Do not touch the area after cleaning it. Let it dry completely.

Step 13

- After your skin has air dried, it is ready for a dressing.
- If you have drainage from around your catheter, put a new gauze over the area where the catheter comes out of your skin.



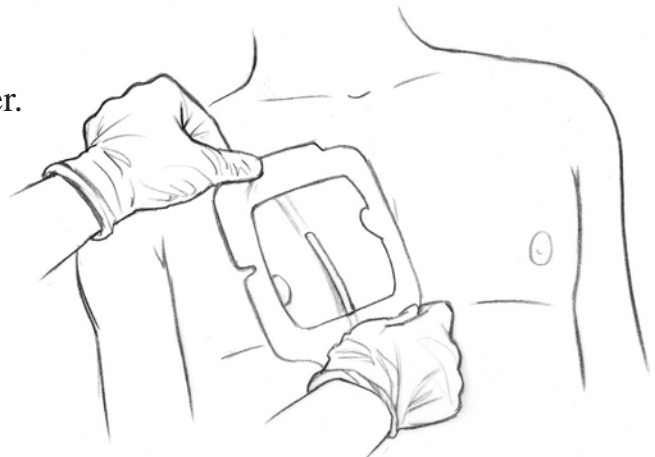
Step 14 A

- Open your clear dressing. Touch only the outer edge. If you touch the inner part of the dressing, you must get a new dressing.
- Peel the back off the clear dressing.



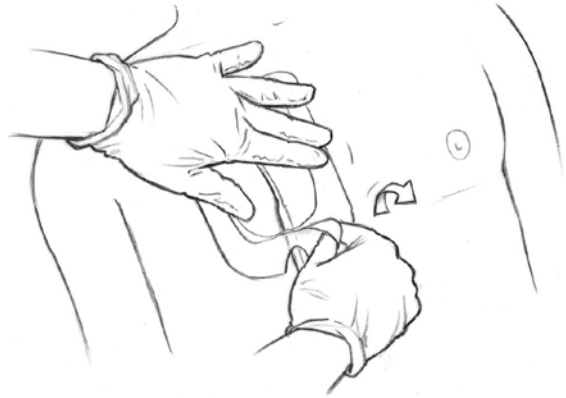
Step 14 B

- Put the clear dressing over your catheter.



Step 14 C

- Peel the paper edge frame off the clear dressing.
- Gently press around the edges of your dressing to be sure the edges stick well to your skin.



Secure the Dressing

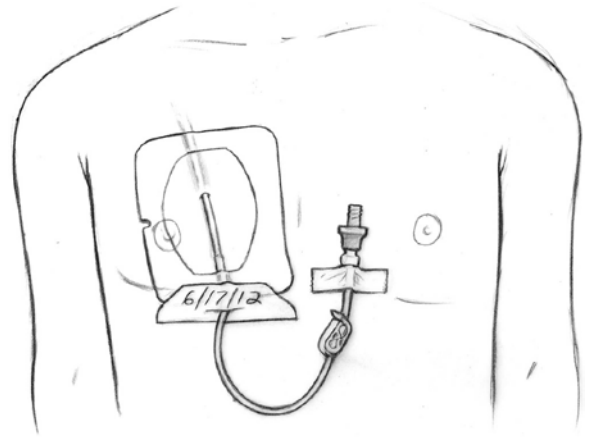
Step 15

- Peel the notched tape off of the paper edge.
- Place the notched tape under the catheter tubing and over the clear dressing.
- Place another piece of tape over the catheter tubing and over the clear dressing.



Step 16

- Loop the IV tubing and secure with tape. **Tape to your skin** – not to the clear dressing, because this may pull the dressing off.
- Write the date of change on the tape.



Step 17

Take off your gloves and mask and throw them away.

The above information contains some, but not necessarily all, of the information that you may need to care for your central line. Please speak with your doctor or nurse if you have questions or issues you may experience.

This document should not take the place of conversations with members of your health care team about your treatment and effects you may experience during and after the use of a central line.

If you experience any significant change in your health during or after treatment, contact a member of your health care team right away.

Developed by the Dana-Farber Cancer Institute and Brigham and Women's Hospital Central Line Education Team, August 2013.